

**Sussex and East Surrey
Sustainability and
Transformation Partnership**

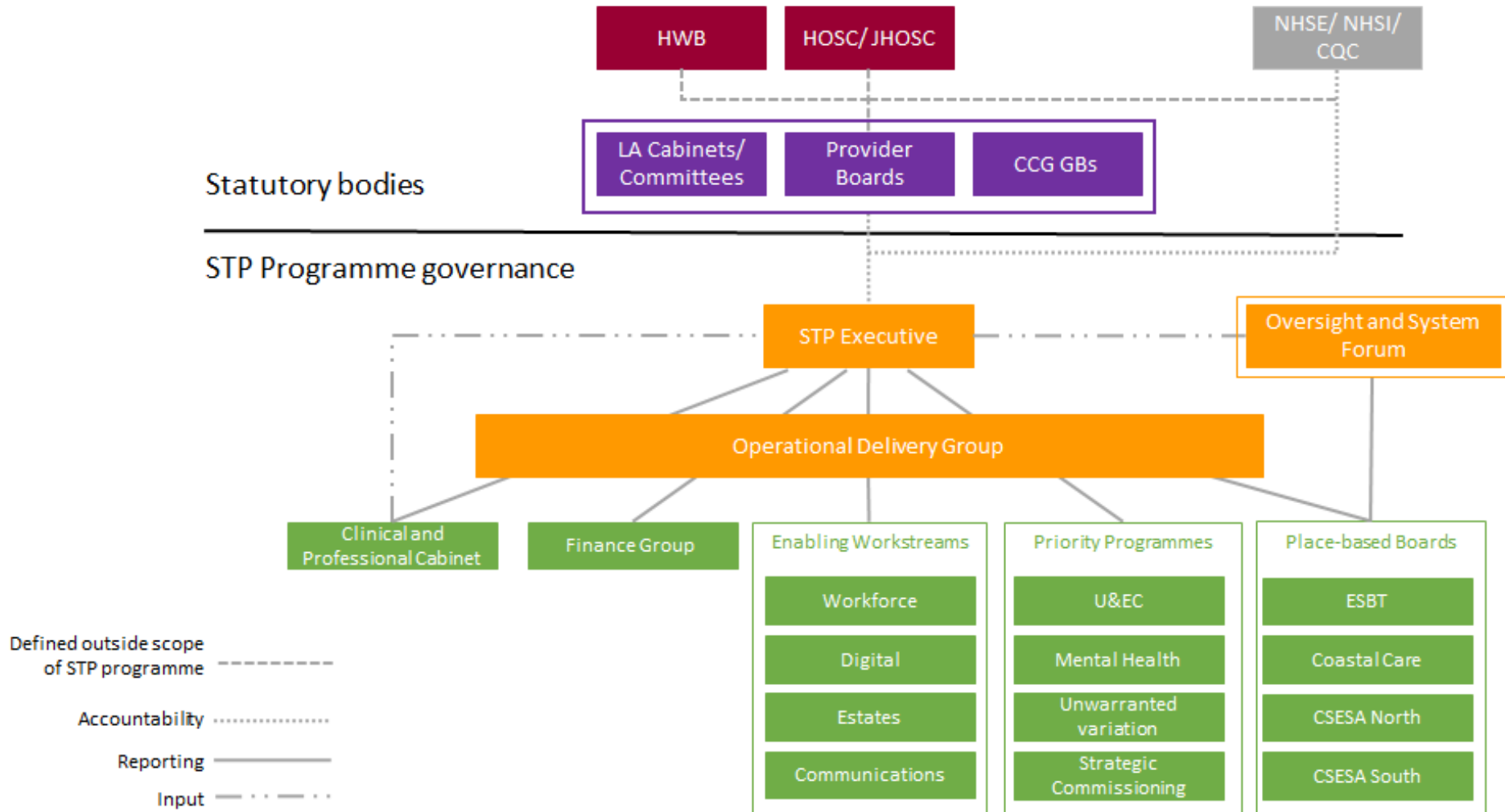


Summary

- Partnership of 23 organisations, across four upper tier local authorities.
 - Executive Chair is Bob Alexander and, working alongside him and the Chief Executives of the NHS organisations, is a programme director, supported by a small programme team.
 - There are a number of workstreams focused on immediate priorities and there are four 'place-based plans', based around the emergency care systems within the STP.
 - Recent governance review has taken place to refine, clarify and improve the governance arrangements. These are inclusive, initially focused on the NHS organisations within the partnership.
 - Discussions are underway around the future of commissioning across the STP. This follows the creation of the Central Sussex Commissioning Alliance and a shared Accountable Officer across CCGs.
-

Governance

Sussex & East Surrey Sustainability & Transformation Partnership



Workstreams

Sussex & East Surrey
Sustainability & Transformation Partnership

- Mental Health
 - Urgent and emergency care
 - Medicines Management
 - Clinically Effective Commissioning
 - Continuing Healthcare
 - Back office functions
 - Estates
 - Digital
 - Workforce
 - Communications and Engagement
 - Finance
-

Recent developments

- STP Executive currently agreeing the strategic and long-term priorities
 - Discussions taking place around the future of commissioning across the STP. Recent consolidation of CCGs through the Central Sussex and East Surrey Commissioning Alliance has realised a number of benefits
 - Case for change is being developed, led by the STP Clinical Cabinet.
 - The STP has been allocated £19m for the development of a new centralised pathology lab.
 - Funding has been achieved for the workforce workstream which will allow us to form a small team to focus on workforce planning, information projects, talent management and leadership development.
-